




TWP-1000 Starter

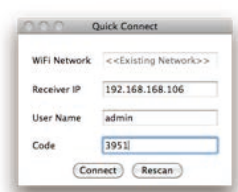
Getting start to make projection wirelessly

• Software you need to install

Device	Software name	Where to get	Description
Windows or Mac Computer	WIPS 	USB dongle Access the TWP-1000 Webpage screen. (Default IP: 192.168.100.10)	Project PC/Mac screens to projector or display at once.
Android phone or Pad; iPhone or iPad	Wifi-doc (Bundle Version) 	Apple store; Google play	High quality presentation via iPhone/iPad or Android devices (Word, Excel, PPT, PDF, Photo, Screenshot)
Android phone or Pad; iPhone or iPad	Mirrorop Receiver 	Apple Store ; Google play	Control the presentation on PC or Mac via iPhone/iPad or Android devices

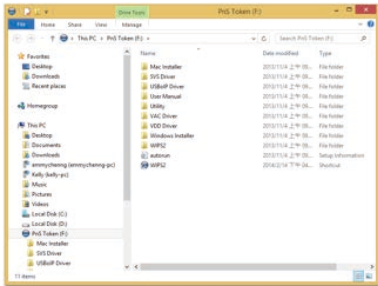


- Click WIPS icon on desktop to execute the application, or launch the application from PnS token directly.
- It will start to search WIPS TWP-1000 receiver automatically.



For Windows or Mac Computer User

- Please install the software WIPS from the USB Dongle directly.
- You can plug the USB Dongle to your Windows PC and You can also launch the application from PnS token directly.) Click and run the auto-play feature so you don't need to install any software to your device.



- Download the WIPS software from connecting your device to TWP-1000.
 - Make sure your PC connect to WIPS TWP-1000 box successfully.
 - Enter the receiver IP address on browser; you can find the IP address on the projector screen. (Default IP is 192.168.100.10)



Start to project

- Make sure your PC WiFi is enabled already, and connect your PC to WIPS TWP-1000 box through WiFi.

For Apple Phone/Pad:



- Enable the WiFi and connect to the Access Point where the WiFi-Doc compatible device connected.
- Select "WiFi-Doc" icon  to launch the client software.
- WiFi-Doc client will start to search for WiFi-Doc compatible devices automatically.



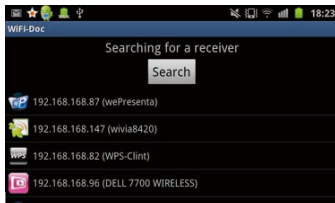
- Choose a WiFi-Doc device, it will popup the login page. Enter the login code and press login.



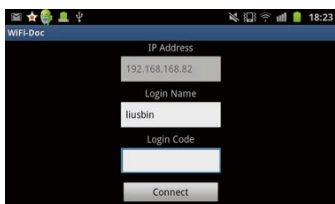
For Android Phone/Pad:



1. Enable the WiFi and connect to the Access Point where the WiFi-Doc compatible device connected.
2. Select "WiFi-Doc" icon  to launch the client software.
3. WiFi-Doc client will start to search for WiFi-Doc compatible devices automatically.



4. Choose a WiFi-Doc compatible device, it will popup the login page.

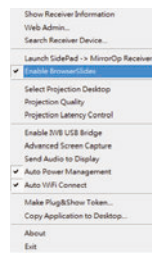


5. Enter the login code and press Connect.
(Press Connect directly if the connected device disabled the login code protection.)
6. Select document file stored on your Android device directly to project these document files.



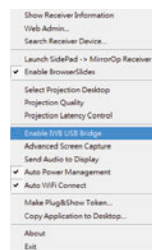
• Enable BrowserSlides

1. Click the "Enable BrowserSlides", it will start to broadcast your slides to the browser on connected mobile devices.
Note: Audience need to connect to TWP-1000 WiFi Network, open the browser and click the "BrowserSlides" button to start receiving the slides.



• Enable USB IWB Bridge







1. Click the "Enable USB IWB Bridge", it will enable the USB IWB Bridge feature.
2. When you start the full screen projection, it will bridge the IWB device to your PC wirelessly.
Note: You have to install the USBtoIP driver first. You can find the driver from USB token.

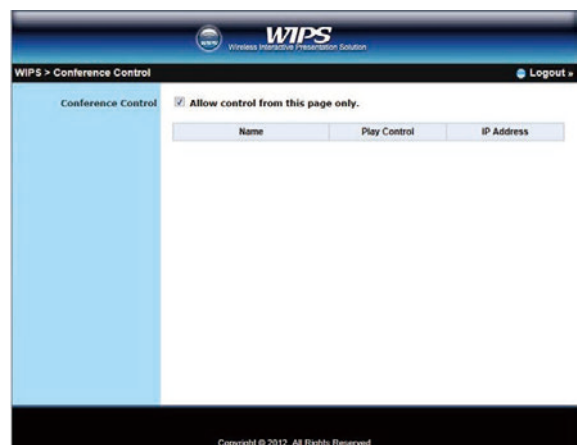


• Conference Control

1. Select "Conference Control" function, it will show current connected sender list.
2. Enter password and then press [Login]. (default password: moderator)



3. After login, you can see a User List on the screen which indicates all of users connected to WIPS TWP-1000 box.
4. There are three columns, "Computer Name", "Play Control" and "IP Address".
5. Play Control, There are six buttons, including Play(Full) , Play Split #1 , Play Split #2 , Play Split #3 , Play Split #4  and Stop .
6. Uncheck the "Allow Control from this page only", it will disable the centralized control and user can project the screen to TWP-1000 freely.



Useful tools for presentation

• Launch SidePad -> MirrorOp Receiver

1. Open the main menu of the TWP-1000 application(Win/Mac), and choose the item, "Launch SidePad -> MirrorOp Receiver (SidePad)"
Note: You have to download the "MirrorOp receiver" on your Android/iOS device, then connect the Android/iOS to WP-1000 device through WiFi and Launch "MirrorOp Receiver".
2. In seconds, you shall see the PC desktop shown on the Android/iOS Device. Use two fingers to pinch or one finger to pan the desktop image and control it by single or double clicks!

